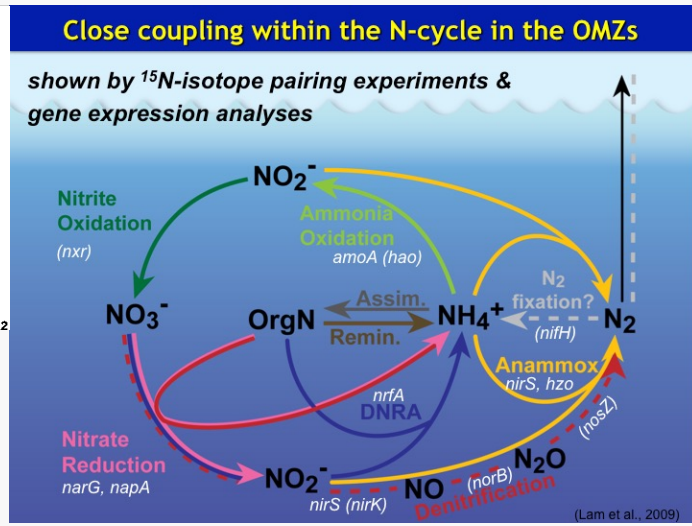
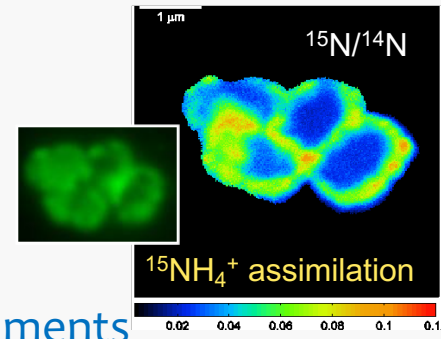


Dr. Phyllis Lam

Associate Professor in Microbial Biogeochemistry

Research Interests

- Microbial ecology and biogeochemical cycling
- Functional roles of microorganisms in the Ocean and the environments
- Combining molecular biological analyses and biogeochemical activity measurements to disentangle elemental cycling and processes in the environments
E.g. Genomics/transcriptomics, bioimaging, microsensors measurements, isotope tracer experiments



- **SONiC**: Shortcuts in the Oceanic Nitrogen Cycle in Twilight Ocean
- **COMICS**: Controls Over Mesopelagic Interior Carbon Storage
 - ❑ Differential roles of microbes inhabiting sinking vs suspended particles
- **GGREW**: Greenhouse Gas Removal by Enhanced Weathering
 - ❑ Microbial enhancement of CO₂ capture by mine waste materials
- **N-power-Life** - N-cycling in a subsurface serpentinising system: an analogue for early life on Earth

