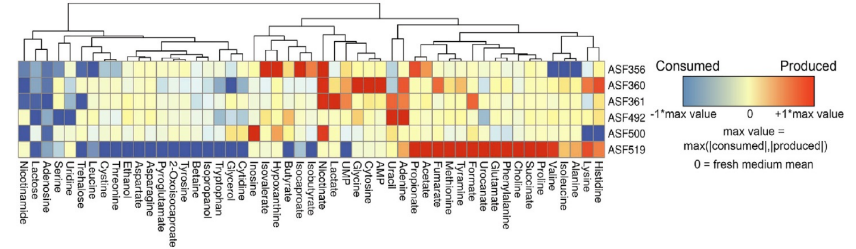


# Jon Swann

Professor of Biomolecular Medicine  
School of Human Development and Health  
Faculty of Medicine

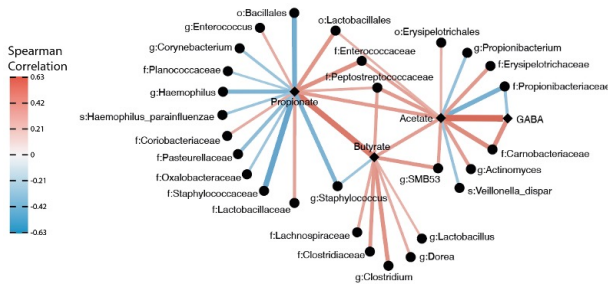
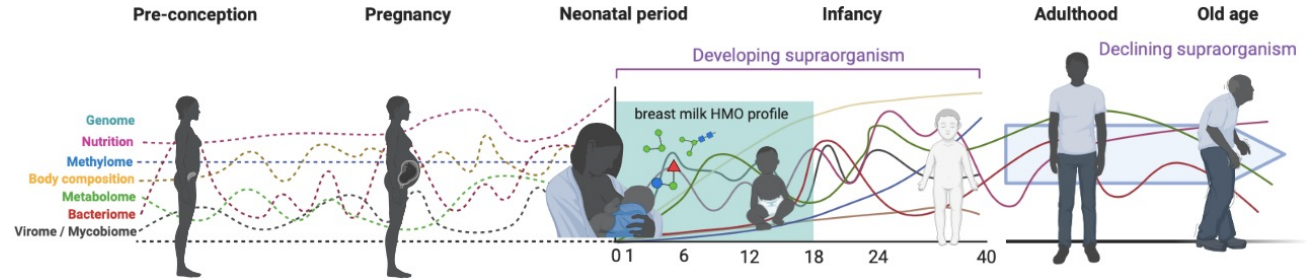
Director of the Clinical Metabolomics Unit

# Bacterial metabolomics

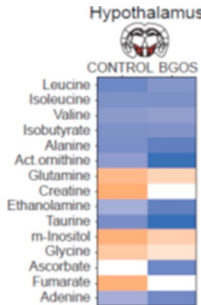


# Holobiont metabolomics

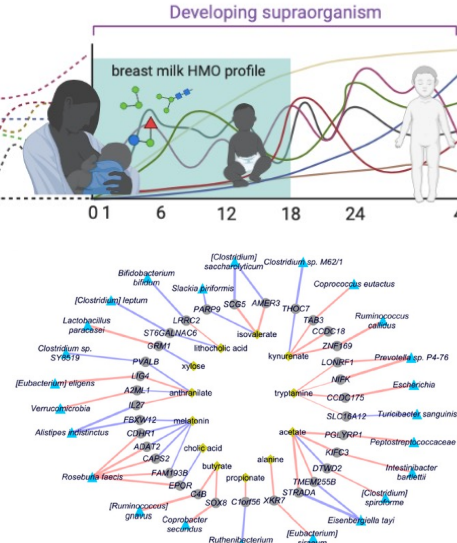
- Multi-omics
- Data integration



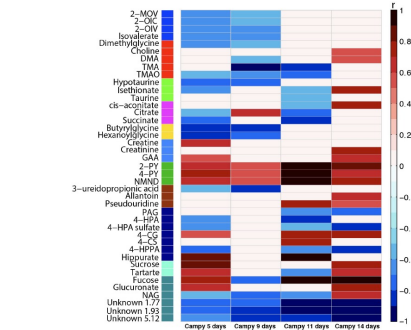
Early-life host-microbe intxns



Gut-Brain Axis



Irritable bowel syndr.



Infection derangements