

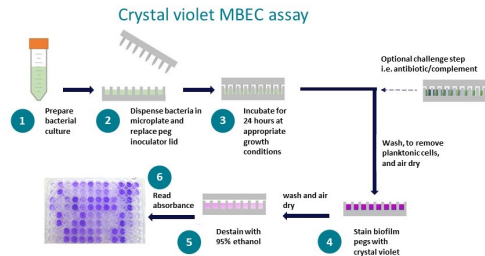
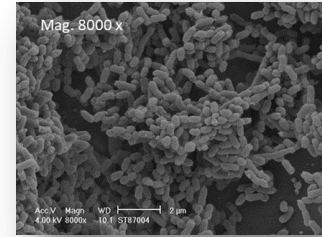
Assessing phenotypic differences between colonising and clinically different strains of non-typeable *Haemophilus influenzae* (NTHi) in biofilms



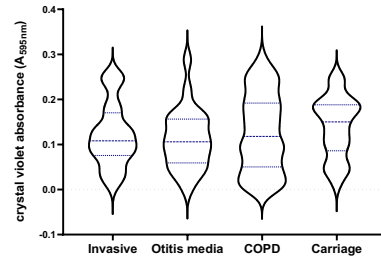
UK Health
Security
Agency

A part-time PhD with the Open University investigating the use of biofilm models to assess >200 NTHi commensal strains and those obtained from clinically relevant sites for:

- Biofilm forming capacity
- Immunological phenotypic differences
- Differences in the expression of virulence determinants
- Differences effecting survival of NTHi in serum and interactions with complement proteins



Biofilm formation screening by site of isolation



What Can I offer?

Several years experience of:

- Immunology, including complement pathogen interactions
- Flow cytometry
- Assay development

What do I want?

Access and insight into

- New and pre-existing technologies.
- Expertise from researchers in the field